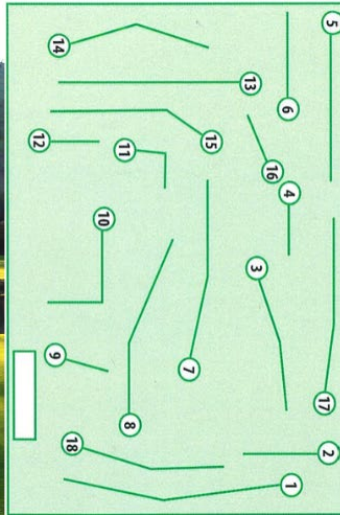


LOCAL RULES

1. A ball striking power lines or poles within the boundaries of the golf course must be replayed without penalty. A ball lying near a power pole may be dropped within two club lengths of the pole without penalty.
2. Abnormal Course Conditions (Including Immovable Obstructions). This Rule covers free relief that is allowed from interference by animal holes, ground under repair, immovable obstructions, or temporary water: These are collectively called abnormal course conditions, but each has a separate Definition.
3. When Relief Is Allowed: (1) Meaning of Interference by Abnormal Course condition interference exists when any one of these is true: The player's ball touches or is in or on an abnormal course condition, an abnormal course condition physically interferes with the player's area of intended stance or area of intended swing, or only when the ball is on the putting green, an abnormal course condition on or off the putting green intervenes on the line of play.
4. Relief Allowed Anywhere on Course Except When Ball Is in Penalty Area. Relief from interference by an abnormal course condition is allowed under Rule 16.1 only when both: The abnormal course condition is on the course (not out of bounds), and the ball is anywhere on the course, **except** in a penalty area (where the player's only relief is under Rule 17).
5. Golf etiquette and proper attire on the course and in the clubhouse should always be observed.
6. All boundary fences are out of bounds.
7. Course Markings:
 Red pegs – Penalty Area
 White pegs – Define ground under repair
 Black pegs – Out of bounds



LOCAL RULES

1. A ball striking power lines or poles within the boundaries of the golf course must be replayed without penalty. A ball lying near a power pole may be dropped within two club lengths of the pole without penalty.
2. Abnormal Course Conditions (Including Immovable Obstructions). This Rule covers free relief that is allowed from interference by animal holes, ground under repair, immovable obstructions, or temporary water: These are collectively called abnormal course conditions, but each has a separate Definition.
3. When Relief Is Allowed: (1) Meaning of Interference by Abnormal Course condition interference exists when any one of these is true: The player's ball touches or is in or on an abnormal course condition, an abnormal course condition physically interferes with the player's area of intended stance or area of intended swing, or only when the ball is on the putting green, an abnormal course condition on or off the putting green intervenes on the line of play.
4. Relief Allowed Anywhere on Course Except When Ball Is in Penalty Area. Relief from interference by an abnormal course condition is allowed under Rule 16.1 only when both: The abnormal course condition is on the course (not out of bounds), and the ball is anywhere on the course, **except** in a penalty area (where the player's only relief is under Rule 17).
5. Golf etiquette and proper attire on the course and in the clubhouse should always be observed.
6. All boundary fences are out of bounds.
7. Course Markings:
 Red pegs – Penalty Area
 White pegs – Define ground under repair
 Black pegs – Out of bounds

Player _____ Handicap _____ Golflink _____ Event _____ Date _____ Gross _____ Nett _____ Points _____

Hole	1	2	3	4	5	6	7	8	9	Out	10	11	12	13	14	15	16	17	18	In	Out	Total	HCP	Nett
Metres	432	111	330	139	438	336	332	270	132	2520	372	302	176	416	304	390	145	446	302	2853	5373			
Match	18	8	3	12	14	6	10	1	16		9	5	11	2	15	7	13	4	17					
Stroke	10/28	12/30	2/20	16	14/32	6/26	4/22	8/24	18/36		7/25	13/31	5/23	3/21	9/27	1/19	17/35	11/29	15/33					
Par	5	3	4	3	5	4	4	4	3	35	4	4	3	4	4	4	3	5	4	35	35	70		
Player																								
Marker																								
Ladies	339	83	305	119	418	312	311	260	110	2257	310	276	128	398	259	375	129	423	258	2556	4813			
Par	5	3	4	3	5	4	4	4	3	35	4	4	3	5	4	5	3	5	4	37	35	72		
Match	18	8	12	3	14	6	10	1	16		5	11	2	15	7	13	4	17	9					
Stroke	5	14	1	16	4	12	6	10	18		11	7	13	9	8	2	17	3	15					

Marker _____ Player _____ Men's Slope Rating - 113 Ladies Slope Rating - 121

Player _____ Handicap _____ Golflink _____ Event _____ Date _____ Gross _____ Nett _____ Points _____

Hole	1	2	3	4	5	6	7	8	9	Out	10	11	12	13	14	15	16	17	18	In	Out	Total	HCP	Nett
Metres	432	111	330	139	438	336	332	270	132	2520	372	302	176	416	304	390	145	446	302	2853	5373			
Match	18	8	3	12	14	6	10	1	16		9	5	11	2	15	7	13	4	17					
Stroke	10/28	12/30	2/20	16	14/32	6/26	4/22	8/24	18/36		7/25	13/31	5/23	3/21	9/27	1/19	17/35	11/29	15/33					
Par	5	3	4	3	5	4	4	4	3	35	4	4	3	4	4	4	3	5	4	35	35	70		
Player																								
Marker																								
Ladies	339	83	305	119	418	312	311	260	110	2257	310	276	128	398	259	375	129	423	258	2556	4813			
Par	5	3	4	3	5	4	4	4	3	35	4	4	3	5	4	5	3	5	4	37	35	72		
Match	18	8	12	3	14	6	10	1	16		5	11	2	15	7	13	4	17	9					
Stroke	5	14	1	16	4	12	6	10	18		11	7	13	9	8	2	17	3	15					

Marker _____ Player _____ Men's Slope Rating - 113 Ladies Slope Rating - 121